

# Bioruptor® DNA QC kit

Track the efficiency of your Bioruptor® Plus\*

Cat. No. B01020001



**DIAGENODE S.A.  
BELGIUM | EUROPE**

LIEGE SCIENCE PARK  
Rue Bois Saint-Jean, 3  
4102 Seraing  
Belgium  
Tel: +32 4 364 20 50  
Fax: +32 4 364 20 51

**DIAGENODE INC.  
USA | NORTH AMERICA**

400 Morris Avenue,  
Suite #101  
Denville, NJ 07834  
USA  
Tel: +1 862 209-4680  
Fax: +1 862 209-4681

**DIAGENODE CO., LTD.  
JAPAN**

1-1-25, Arakawa  
Toyama 930-0982  
Japan  
Tel: +81 76-482-3110  
Fax: +81 76-482-3211

<https://www.diagenode.com/en/pages/support>

\* This kit is also validated on the Bioruptor® Standard and the Bioruptor® TWIN

Version 2/09.2016

Dear customer,

We have developed the DNA Quality Control Kit for you to be able to track the efficiency of your Bioruptor and to figure out the right time for servicing. After the sonication, if your QC does not reach our standards, please, contact Diagenode for recommendations. However, if your QC passes, we wish you every success with your Bioruptor.

Thank you for your confidence in Diagenode.

Best regards,

The Bioruptor maintenance service team



## KIT CONTENT

The kit contains sufficient reagents for performing one shearing experiment.

Description	Quantity	Storage
Unsheared DNA (10 ng/μl)	12 tubes (100 μl/tube)	4°C
Control sheared DNA 200bp (10 ng/μl)	1 tube (20 μl/tube)	4°C
Datasheet of the control	1	-

*Lot number: 001 - Expiry Date: One year from the date of receipt*

## REQUIRED MATERIALS NOT PROVIDED

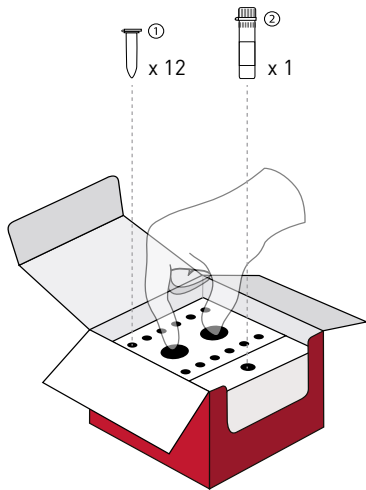
- Bioruptor® PLUS – Bioruptor® Standard – Bioruptor® TWIN
- Tube holder for 12 X 0.5/0.65 ml tubes (Cat No. B01200043)
- Vortex
- Fragment Analyzer Automated™ **CE** System and a High-sensitivity NGS Fragment Analyses Kit (1 bp-6000 bp) *(Advanced Analytical)*

or

- Bioanalyzer and a High Sensitivity DNA kit *(Agilent)*

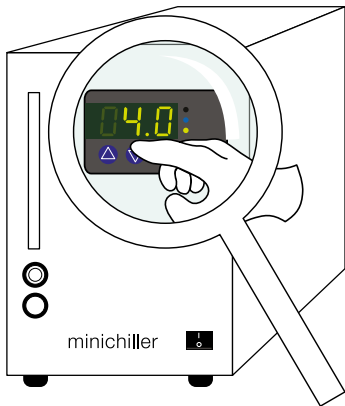
# DESCRIPTION

1. Unsheared DNA : TE buffer + gDNA (10 ng/ $\mu$ l)
2. Control sheared DNA 200 bp (10 ng/ $\mu$ l)



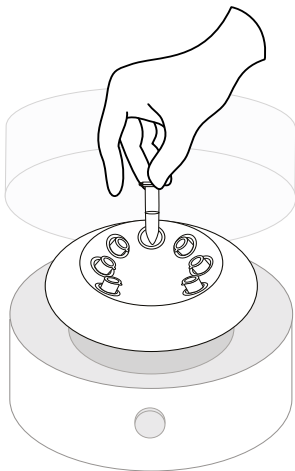


- 1 **Start** the Bioruptor® and **set** the temperature at **4°C**



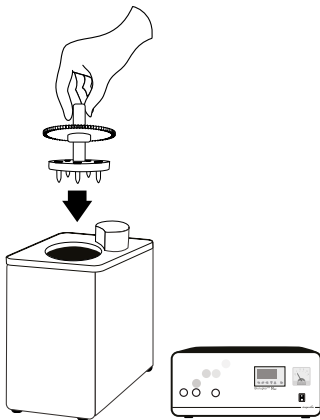


- 2 **Centrifuge** the tubes for ~ 10 seconds and **store** on ice for 15 minutes

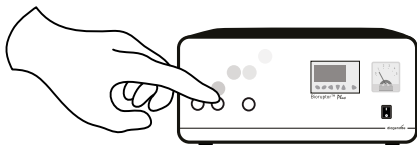


- 3** Check if the **water temperature** reached **4°C** and place the tubes in the **tube holder**

**Note:** all 12 tubes need to be run in parallel for a valid QC test evaluation



- 4** Set the power at **LOW** and **set** the number of cycle and the time ON/time OFF (**30 cycles** with 30 seconds ON and 30 seconds OFF cycle times)





## 5 **Analyze** the sheared samples and the control sheared DNA sample (optional) on:



- a **Fragment Analyzer Automated™ CE** System with a High-sensitivity NGS Fragment Analyses Kit (1 bp-6000 bp) (*Advanced Analytical*) > **5a**

or

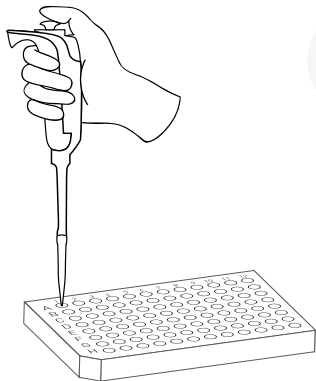


- a **Bioanalyzer** with a High Sensitivity DNA kit (*Agilent*) > **5b**



**Note:** Agarose gels and are not recommended as they do not provide sufficient resolution to quantitatively assess the Bioruptor DNA QC results

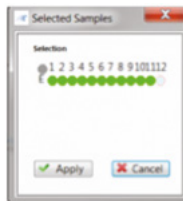
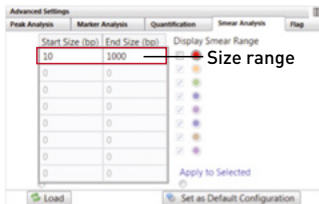
## 5a Run 2 $\mu$ l per sample on the **Fragment Analyzer™**



**Record** the average size for each sample ( $X_i$ ) using a smear analysis option with a size range of 10-1000 bp



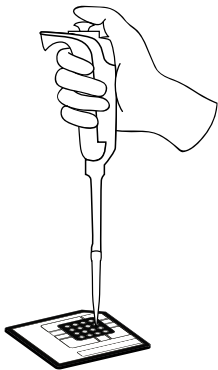
**Click** on the tools icon (in the bottom corner on the right)



**$X_i$**

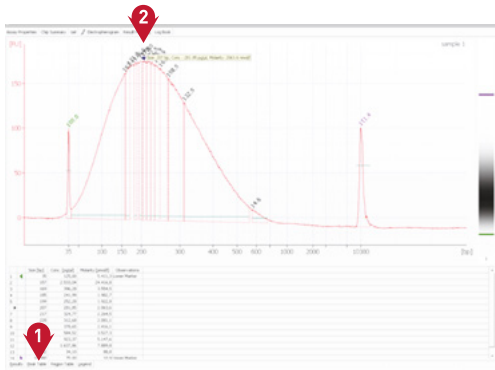
Peak Table	Smear Analy				
IT	Range	retail	% Total	retail	
F1: SmearF1	10 hrs to 1000 N 3.983	99.8	30.0545	218	48.71
F2: SmearF2	10 hrs to 1000 N 4.324	99.8	30.6915	234	49.25
F3: SmearF3	10 hrs to 1000 N 4.536	100.0	37.8476	277	48.20
F4: SmearF4	10 hrs to 1000 N 3.816	99.8	27.4771	229	50.02
F5: SmearF5	10 hrs to 1000 N 4.062	99.9	29.0635	230	49.83
F6: SmearF6	10 hrs to 1000 N 4.396	99.9	31.6134	229	49.26
F7: SmearF7	10 hrs to 1000 N 3.893	99.8	28.0276	238	50.00
F8: SmearF8	10 hrs to 1000 N 4.395	99.9	32.1052	223	49.16

## 5b Run 1 $\mu\text{l}$ per sample on the Bioanalyzer





**Record** the peak size for each sample ( $X_i$ ) manually as maximum amplitude of the generated electrophoregram curve



1. Select "Peak Table"
2. Point with the mouse the peak maximum; the size value (Xi) will appear on the screen.

## 6 Use the $\Sigma$ values for the calculation of:

- mean size ( $\mu$ )
- standard deviation ( $\sigma$ )
- coefficient of variation ( $\%CV = \sigma / |\mu| * 100\%$ )
- an .xls template to facilitate calculations is available here: <https://www.diagenode.com/en/documents/diagenode-bioruptor-dna-qc-kit-analysis-template>.

Sonication results are considered as excellent or very good if  
 **$\mu < 220$  bp and  $CV\% < 15\%$**



Your QC failed or you need help to perform the QC, please contact us at <https://www.diagenode.com/en/pages/support>

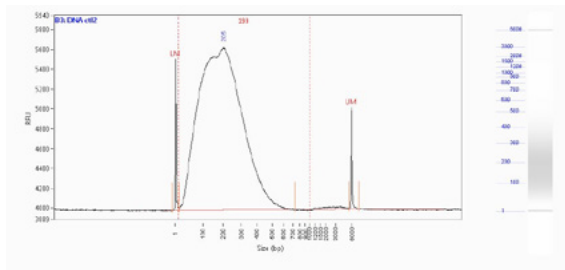


## TECHNICAL DATASHEET

Human genomic DNA was sheared using the Bioruptor. After shearing, the DNA was analyzed using 2 different methods:



### 1. Fragment analyzer analysis

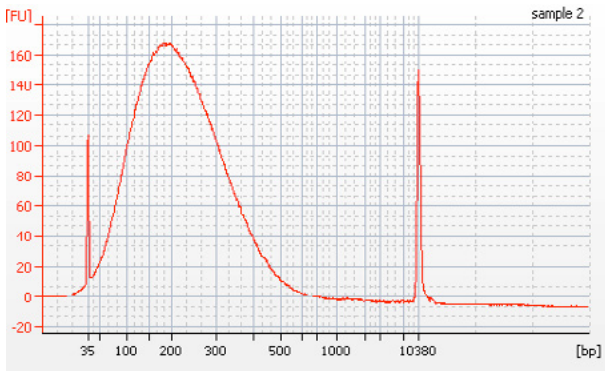


The sheared DNA was analyzed on a Fragment Analyzer Automated™ System with a High-sensitivity NGS Fragment Analyses Kit (1 bp-6000 bp) (*Advanced Analytical*).

**Conclusion**: a peak at 199 bp is observed.



## 2. Bioanalyzer analysis



The sheared DNA was analyzed on a Bioanalyzer with a High Sensitivity DNA kit (*Agilent*).

**Conclusion:** a peak at 188 bp is observed.

Test method	Expected results	Result
Fragment Analyzer™	Majority of the fragment lengths in the 200+/-100 bp range	Passed
Bioanalyzer	Majority of the fragment lengths in the 200+/-100 bp range	Passed

**This product is in accordance with the expected specifications**



Jan Hendrickx  
Kit and Antibody Production  
Diagenode

---

**August 25, 2016**

FOR IN VITRO RESEARCH USE ONLY  
NOT RECOMMENDED OR INTENDED FOR DIAGNOSIS OF DISEASE IN HUMANS  
DO NOT USE IN HUMANS



© 2016 Diagenode, Inc. All rights reserved.  
The content of this document cannot be reproduced without prior permission of the authors.